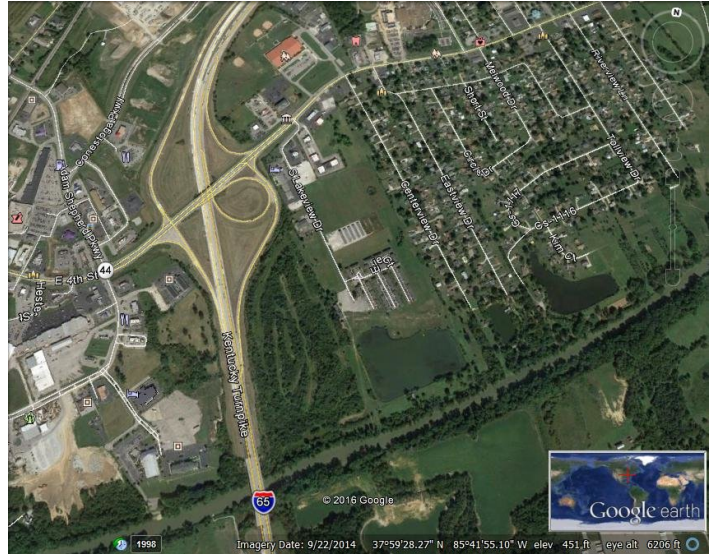


# I-65 Prime Frontage Land

## S Lakeview Dr Shepherdsville, KY , Shepherdsville, KY 40165

Listing ID:	30325688
Status:	Active
Property Type:	Vacant Land For Sale
Possible Uses:	Hospitality, Industrial
Gross Land Area:	43.80 Acres
Sale Price:	\$4,500,000
Unit Price:	\$102,739 Per Acre
Sale Terms:	Cash to Seller
Nearest MSA:	Louisville/Jefferson County
County:	Bullitt
Tax ID/APN:	045-SWP-02-030
Zoning:	B1 - Highway Business
Property Visibility:	Excellent
Highway Access:	Easy access to site via S Lakeview Dr off US Hwy 44 at the Interstate 65 117 exit

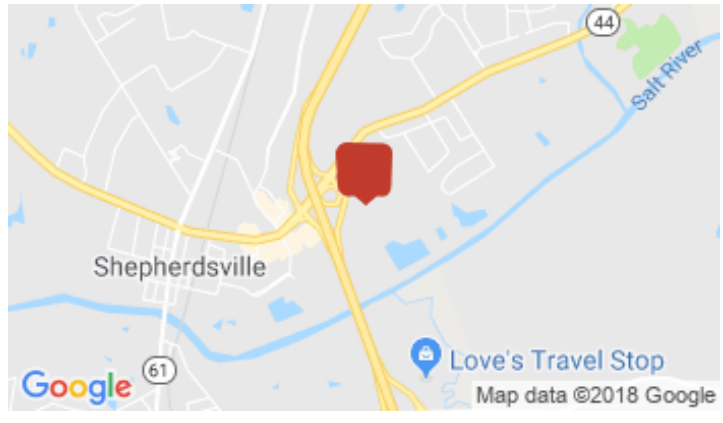


### Overview/Comments

Prime frontage on a 43.8 acre parcel of land with direct northbound I-65 frontage that has an average of 84,796 traffic count per day in both directions. Ideal for an outdoor big box store, outlet mall or other retail business operations.

Shepherdsville and I-65 Exit 117 in the path of progress south down the I-65 corridor. Cross high 44 with a daily traffic count of 22,900.

Exit 117 now has a McDonalds, a White Castles and now their own Starbucks just over the freeway from this site. There are a host of supporting hotels/motels at this interchange.



### More Information Online

<http://www.kcrea.com/listing/30325688>

### QR Code

Scan this image with your mobile device:



### Property Contacts



#### David R Day

David Day Real Estate  
502-296-5596 [M]  
502-296-5596 [O]  
david@daviddayre.com

# Exit 117 - I-65 Fishing Lake, potential Campground

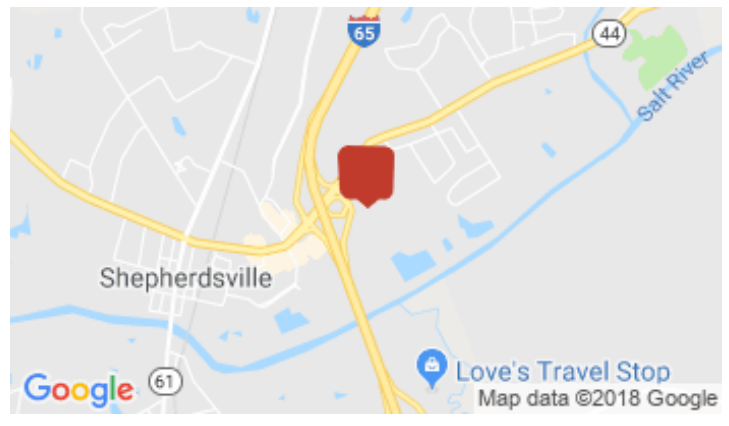
## S Lakeview Drive, Shepherdsville, KY 40165

Listing ID:	30325775
Status:	Active
Property Type:	Vacant Land For Sale
Possible Uses:	Agricultural, Industrial
Gross Land Area:	26.60 Acres
Sale Price:	\$1,330,000
Unit Price:	\$50,000 Per Acre
Sale Terms:	Cash to Seller, Owner Financing
Nearest MSA:	Louisville/Jefferson County
County:	Bullitt
Zoning:	R-1
Highway Access:	Hwy 44 at the I-65 117 exit.



### Overview/Comments

Located along the Salt River at Exit 117 off Interstate 65 this is prime land for an RV Park development. The 26.6 acres surround a fishing lake and this is an ideal stop for RV travelers just South of Louisville, Kentucky.



#### More Information Online

<http://www.kcrea.com/listing/30325775>

#### QR Code

Scan this image with your mobile device:



### Property Contacts



#### David R Day

David Day Real Estate  
502-296-5596 [M]  
502-296-5596 [O]  
david@daviddayre.com

# Retail/Office Opportunity

## 430 E 7th St, Jeffersonville, IN 47130

Listing ID:	30204058
Status:	Active
Property Type:	Retail-Commercial For Sale
Retail-Commercial Type:	Convenience Store, Free-Standing Building
Sale Price:	\$199,000
Unit Price:	\$125 PSF
Sale Terms:	Cash to Seller
Nearest MSA:	Louisville/Jefferson County
County:	Clark
Tax ID/APN:	10-19-00-101-268.000-010
Zoning:	RETAIL
Property Use Type:	Investment, Business
Building/Unit Size (RSF):	1,592 SF



### More Information Online

<http://www.kcrea.com/listing/30204058>

### QR Code

Scan this image with your mobile device:



## Property Contacts



**David R Day**  
David Day Real Estate  
502-296-5596 [M]  
502-296-5596 [O]  
david@daviddayre.com



**Tony A Stefater**  
The Breland Group  
502-645-3164 [M]  
502-645-3164 [O]  
tonystefater@gmail.com

# Lot for Sale

## 424 E 7th St, Jeffersonville, IN 47130

Listing ID:	30204512
Status:	Active
Property Type:	Vacant Land For Sale
Possible Uses:	Office, Residential (Single Family)
Gross Land Area:	0.09 Acres
Sale Price:	\$39,900
Unit Price:	\$443,333 Per Acre
Sale Terms:	Cash to Seller
Nearest MSA:	Louisville/Jefferson County
County:	Clark
Tax ID/APN:	10-19-00-101-267.000-010
Zoning:	RESIDENTIAL
Property Visibility:	Fair



### More Information Online

<http://www.kcrea.com/listing/30204512>

### QR Code

Scan this image with your mobile device:



## Property Contacts



**David R Day**  
David Day Real Estate  
502-296-5596 [M]  
502-296-5596 [O]  
david@daviddayre.com



**Tony A Stefater**  
The Breland Group  
502-645-3164 [M]  
502-645-3164 [O]  
tonystefater@gmail.com

---

# Online Marketing

## David R Day, David Day Real Estate

For maximum exposure, we promote listings on as many websites as possible, including the wide variety of local, regional, and national sites below.

### Promoted on these Websites

---

#### KCREA

<http://www.kcrea.com>

A commercial information exchange (CIE), serving The State of Kentucky, powered by Catylist.



---

#### Google

<http://google.com>

The world's leading search engine.



---

#### Catylist.com

<http://catylist.com>

Catylist's national commercial real estate search engine, drawing thousands of visitors daily.

---